

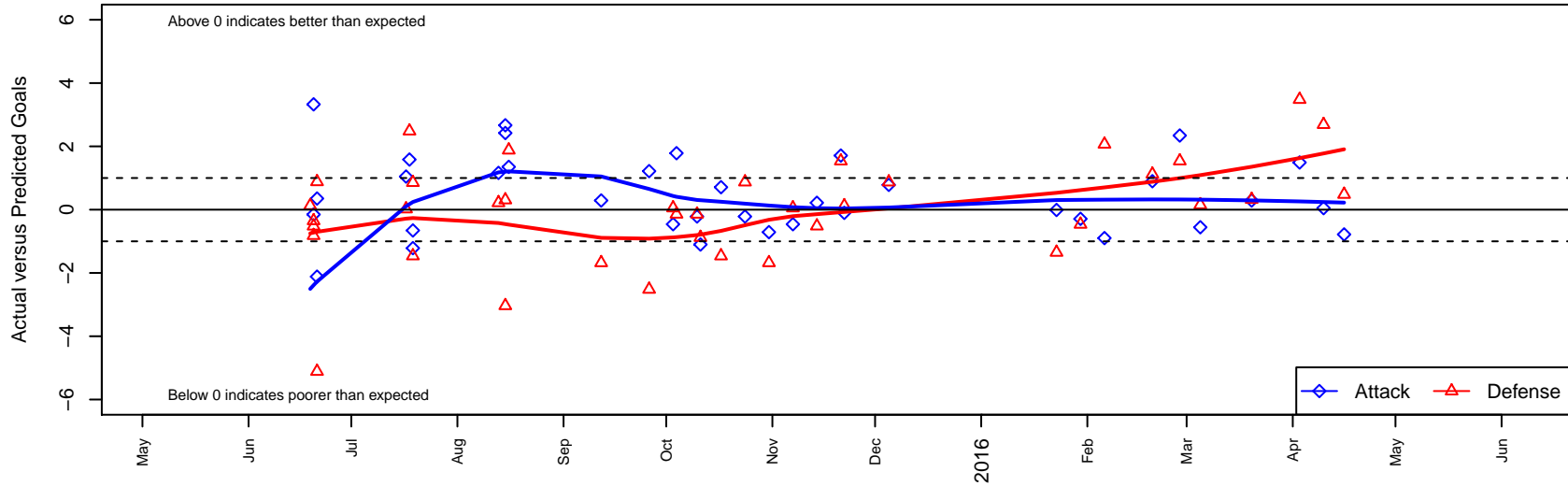
# Snohomish United Black B01

Snohomish Youth SC  
 Snohomish, WA  
 B01 total strength=1329  
 attack=7.01 defense=5.57  
 fall league = RCL B01 Div 2  
 spr league = Win RCL B01 Div 2

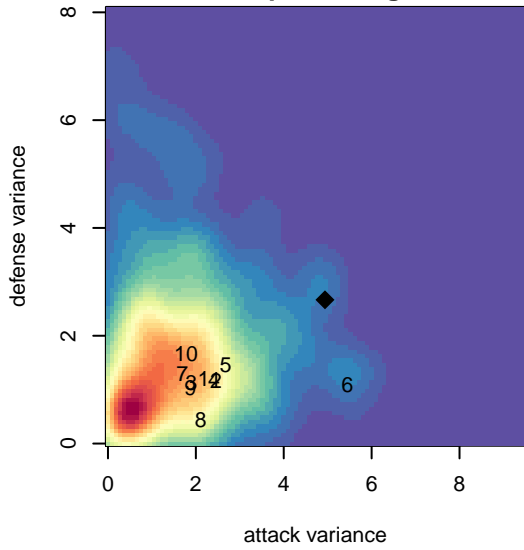
alt names used:  
 SNOHOMISH UNITED BOYS U14 BLACK (WA  
 SNOHOMISH UNITED BLACK A  
 KYSA KENT UNITED KENT UNITED B01 BLAC  
 SNOHOMISH UNITED BLACK A  
 SNOHOMISH UNITED BLACK A

Venues played:  
 2015 Snohomish United Invit Group A  
 2015 Snohomish United Invit BU15  
 2015 Nike Crossfire Challenge Super Group U'  
 2015 Bigfoot Group A U15  
 2015 RCL B01 Div 2  
 2015 Win RCL B01 Div 2  
 2015 WYS Championship B01

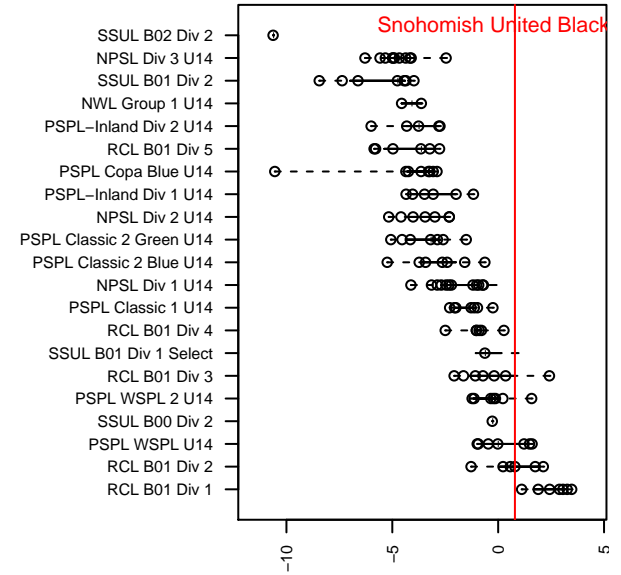
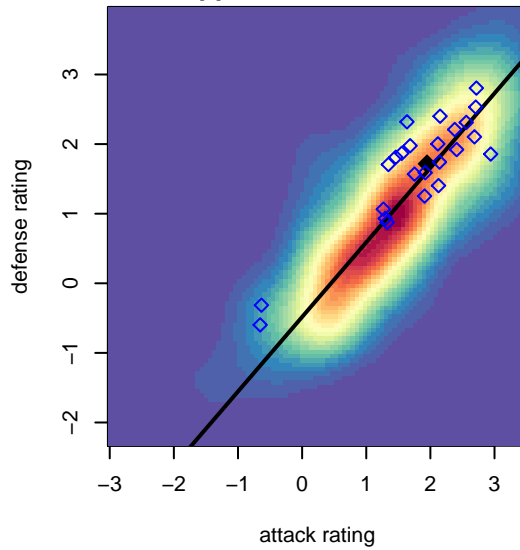
**Snohomish United Black B01**  
 Dots are actual minus expected GF (blue circles) and GA (red triangles).  
 Blue line is smoothed change in attack strength. Red is smoothed change in defense strength.



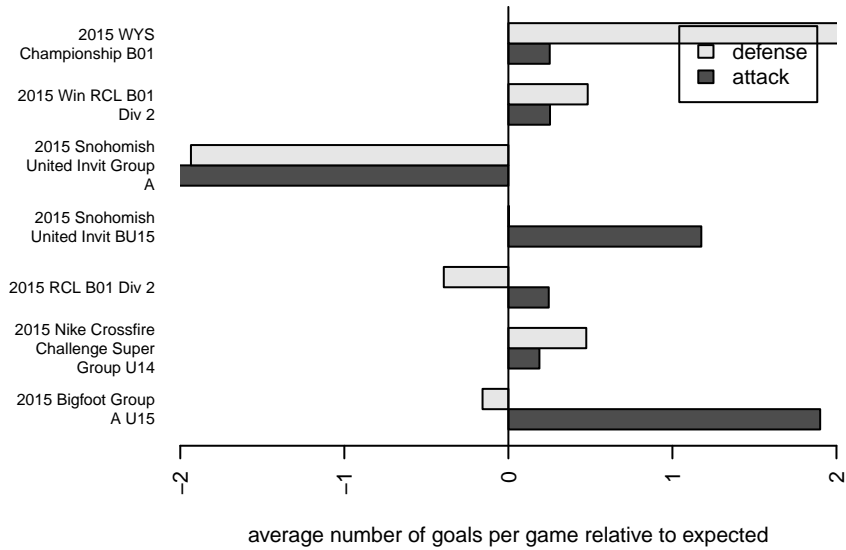
**attack and defense variance (black dot)  
relative to other teams  
and top 10 in region**



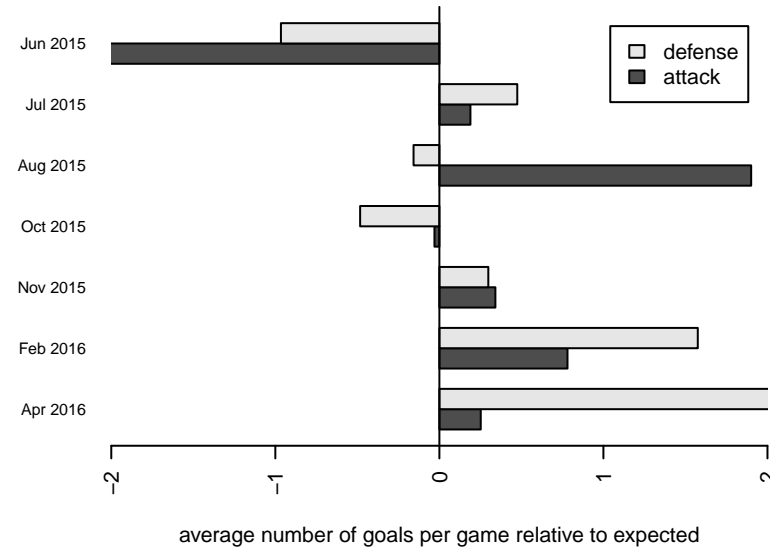
**attack and defense rating  
relative to others at age  
and all opponents in last 13 months**



**Performance relative to 13 month average**



**Performance relative to 13 month average**



date	home		away		venue	pred.home	pred.away
2016-04-16	SSC Shadow A B01	2	Snohomish United Black B01	0	2015 WYS Championship B01	2.48	0.78
2016-04-10	Snohomish United Black B01	1	PacNW Maroon B01	2	2015 WYS Championship B01	0.95	4.69
2016-04-03	Eastside FC Red B01	0	Snohomish United Black B01	2	2015 WYS Championship B01	3.48	0.51
2016-03-20	PacNW Blue B01	2	Snohomish United Black B01	1	2015 Win RCL B01 Div 2	2.32	0.71
2016-03-05	3 Rivers Black B01	1	Snohomish United Black B01	0	2015 Win RCL B01 Div 2	1.15	0.56
2016-02-28	Snohomish United Black B01	3	Washington Timbers Red B01	2	2015 Win RCL B01 Div 2	0.66	3.54
2016-02-20	Snohomish United Black B01	2	Seattle United Tango B01	0	2015 Win RCL B01 Div 2	1.10	1.12
2016-02-06	Snohomish United Black B01	0	Whatcom Rangers Gold B01	0	2015 Win RCL B01 Div 2	0.90	2.07
2016-01-30	NWN Red B01	2	Snohomish United Black B01	1	2015 Win RCL B01 Div 2	1.54	1.29
2016-01-23	Snohomish United Black B01	1	WPFC White B01	3	2015 Win RCL B01 Div 2	1.01	1.65
2015-12-05	Crossfire Premier B B01	0	Snohomish United Black B01	2	2015 RCL B01 Div 2	0.87	1.22
2015-11-22	Snohomish United Black B01	1	Seattle United Tango B01	1	2015 RCL B01 Div 2	1.10	1.12
2015-11-21	Snohomish United Black B01	3	NWN Red B01	0	2015 RCL B01 Div 2	1.29	1.54
2015-11-14	SSC Shadow A B01	3	Snohomish United Black B01	1	2015 RCL B01 Div 2	2.48	0.78
2015-11-07	Snohomish United Black B01	0	Crossfire Yakima B01	2	2015 RCL B01 Div 2	0.46	2.05
2015-10-31	PacNW Blue B01	4	Snohomish United Black B01	0	2015 RCL B01 Div 2	2.32	0.71
2015-10-24	Snohomish United Black B01	1	Crossfire Premier B B01	0	2015 RCL B01 Div 2	1.22	0.87
2015-10-17	NWN Red B01	3	Snohomish United Black B01	2	2015 RCL B01 Div 2	1.54	1.29
2015-10-11	Seattle United Tango B01	2	Snohomish United Black B01	0	2015 RCL B01 Div 2	1.12	1.10
2015-10-10	Snohomish United Black B01	2	PacNW White B01	1	2015 RCL B01 Div 2	2.22	0.86
2015-10-04	PacNW White B01	1	Snohomish United Black B01	4	2015 RCL B01 Div 2	0.86	2.22
2015-10-03	Crossfire Yakima B01	2	Snohomish United Black B01	0	2015 RCL B01 Div 2	2.05	0.46
2015-09-26	Snohomish United Black B01	2	SSC Shadow A B01	5	2015 RCL B01 Div 2	0.78	2.48
2015-09-12	Snohomish United Black B01	1	PacNW Blue B01	4	2015 RCL B01 Div 2	0.71	2.32
2015-08-16	Snohomish United Black B00	1	Snohomish United Black B01	2	2015 Bigfoot Group A U15	2.88	0.65
2015-08-15	Snohomish United Black B01	4	Seattle United S Black B00	5	2015 Bigfoot Group A U15	1.58	1.96
2015-08-15	Snohomish United Black B01	4	Crossfire Select Cantrell B00	1	2015 Bigfoot Group A U15	1.33	1.31
2015-08-13	Snohomish United Black B01	2	Southlake Select Eagles Red B00	1	2015 Bigfoot Group A U15	0.84	1.22

<b>date</b>	<b>home</b>		<b>away</b>		<b>venue</b>	<b>pred.home</b>	<b>pred.away</b>
2015-07-19	Snohomish United Black B01	1	PacNW White B01	0	2015 Nike Crossfire Challenge Super Grou	2.22	0.86
2015-07-19	Washington Timbers Red B01	5	Snohomish United Black B01	0	2015 Nike Crossfire Challenge Super Grou	3.54	0.66
2015-07-18	Seattle United Copa B01	1	Snohomish United Black B01	2	2015 Nike Crossfire Challenge Super Grou	3.48	0.42
2015-07-17	HSC Milan B01	1	Snohomish United Black B01	2	2015 Nike Crossfire Challenge Super Grou	1.02	0.95
2015-06-21	Emerald City FC Green B01	6	Snohomish United Black B01	0	2015 Snohomish United Invit Group A	0.89	2.12
2015-06-21	Snohomish United Black B00	2	Snohomish United Black B01	1	2015 Snohomish United Invit BU15	2.88	0.65
2015-06-20	Snohomish United Black B01	0	Crossfire Premier D B01	1	2015 Snohomish United Invit Group A	8.03	0.18
2015-06-20	Snohomish United Black B01	2	MVP Rapids Navy B01	1	2015 Snohomish United Invit BU15	2.15	0.65
2015-06-20	Snohomish United Black B01	5	ISC Gunners B B00	2	2015 Snohomish United Invit BU15	1.67	1.48
2015-06-19	Snohomish United Black B01	2	Snohomish United White B01	0	2015 Snohomish United Invit Group A	9.71	0.13